



AIR CUSHION MACHINE PRO

OPERATION MANUAL



Please carefully read the instruction manual before installing and using the product and remember to store it properly.

1.0 About Operation Manual

This manual is designed to help you identify the location of machine parts, understand the system's operation, and troubleshoot basic malfunctions.

Special Symbols and Their Meanings:



"Lightning Flash" Symbol: Indicates uninsulated parts inside the machine. Contact may result in electric shock.



"High Temperature Danger" Symbol: Alerts the operator to the danger of high temperatures. Do not touch.



"Hand Clamping" Symbol: Cautionary reminder to the operator to be mindful of hand clamping during machine operation.

2.0 Safety Instructions

2.1 Please read this manual carefully and ensure full understanding of all information provided

2.2 Before proceeding with operation, please ensure the following:

1. The operator has received comprehensive training from authorized dealers or technicians or watched the installation and operation videos.
2. The operator has thoroughly read and understood all safety signs displayed on the device.
3. Verify that the power source for the air filling machine meets the specified requirements and is equipped with a grounding device.

2.3 Warnings



Warning: Improper grounding can result in electric shock.



Warning: **DO NOT** open the machine cover. Disassembly of the cover should be performed only by authorized technicians or trained maintenance personnel. Opening or disassembly will void the warranty.



Warning: Be cautious of being pulled into the machine! When the machine is in operation, such as when pulling or inflating the film, or sealing, please ensure that fingers, hair, jewelry, and clothing are kept clear of the sealing roller.



Warning: Beware of burns. Pay close attention to the surface of the sealing roller, as the high temperature sealing line may cause burns.

2.4 Before conducting maintenance on the equipment, please ensure the following:

1. Please shut down the system's power source and disconnect it from the power outlet.
2. Important Note: The D60 air filling machine is designed for use exclusively with our company's film. We cannot guarantee the performance with other manufacturer's film and use of other film may void the warranty if it results in damage to the machine.



Warning: Except for procedures outlined in the "Maintenance & Repair" section of this manual, do not attempt to repair or modify the D60 filling machine. Repairs should only be conducted by representatives, authorized distributors, or professional maintenance personnel trained by our company.



Warning: Please refrain from opening the belt cover unless executing the belt replacement procedure outlined in this manual.

2.5 Regularly inspect the equipment to ensure

1. The wires of all parts are not scratched, damaged, or broken.
2. There is no debris remaining on the belt
3. All control parts and display units are operating normally.



Warning: If there are any inconsistencies with the system description outlined in the manual during use, please immediately turn off the system, unplug the power plug, and contact our technical service representative.

2.6 Noise Information

The maximum running noise level of the D60 air filling machine is measured at 95 decibels. It is important to verify if this value complies with local regulations and standards regarding permissible noise levels.

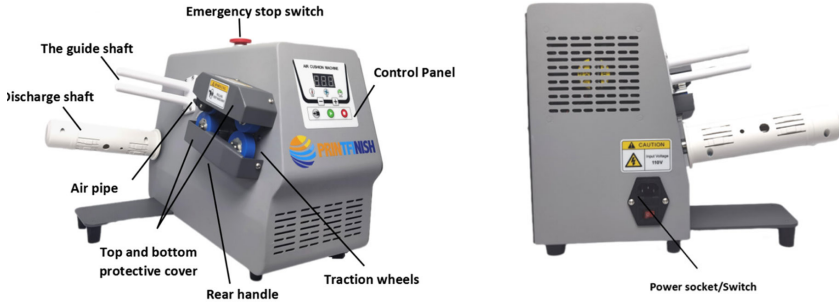
2.7 Environmental Conditions Information

1. Storage temperature: Machine: 0-43°C; Film: 0-43°C
2. Operating temperature: Machine: 16-43°C; Film: 16-43°C

2.8 Potential Risks Information

Despite most of the D60 being equipped with a belt cover, please remain cautious during operation as certain parts may remain exposed.

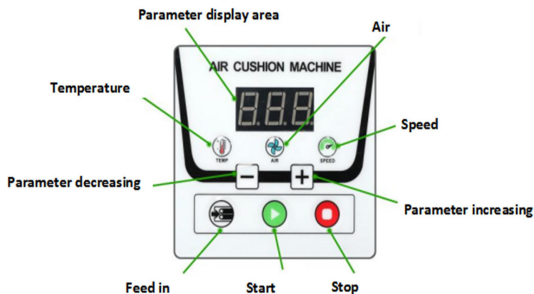
3.0 D60 Air Cushion Parts



3.1 Accessories and Spare Parts List

Name	Qty.
Roll shaft	1
Guide shaft	1
Allen wrench	3
Power cord	1
Blades	3
Manual	1
Machine	1

4.0 D60 Operation Panel and Keys



5.0 Specification

5.1 Appearance

Product size (LxWxH): 16.34 x 14.96 x 13.39 in / 415 x 380 x 340mm

Net weight: 22.05 lbs. / 10 Kg

5.2 Electrical performance Level 001-100 adjustable (max 12m/

Model:	D60
Input voltage:	AC 110V
Rate power:	350W
Rate frequency:	50HZ/60HZ
Power connection	Y
Electric Shock Protection Class:	I
Heat seal temperature:	Level 001-255 adjustable
Speed:	Level 001-100 adjustable (max 12m/min)
Air flow speed:	Level 001-100 adjustable

6.0 Installation instructions

6.1 Installation of Roll Shaft (Refer to Section 3.0 Appearance Structure Diagram for Installation Position):



6.1.1 Remove the Roll shaft from the packaging bag, turn the screw thread of the Roll shaft clockwise into the screw hole until it cannot be turned.

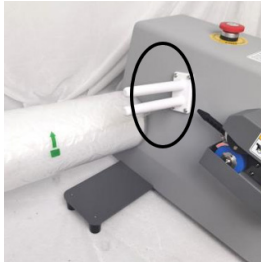


6.1.2 Remove the Packing sticker, extract the hex wrench, and proceed with the installation of the Film Guide shaft.

6.2 Machine operation instruction



6.2.1 Insert the power cord into the power socket of the inflator and turn on the power switch. Turn the switch to the “-” position to start the machine.



6.2.2 Place the film onto the film guide shaft, making sure the film's channel is on the machine's side.



6.2.3 Start by guiding the membrane through the air pipe head.



6.2.4 With your left hand, pull the film to the right, and simultaneously press the feed button with your right hand until the film is aligned with the edge of the body or extends beyond the machine.



6.2.5 After adjusting the settings to match the type of film (see Section 7.0 for recommended settings), press the start button to initiate the inflation process.

7.0 Recommended Parameters

7.1 Recommended Parameters for Air Pillow Roll: If sealing is not achieved, consider adjusting the temperature by increasing or decreasing it accordingly.

Recommended parameters for AIR PILLOW ROLL			
Film Thickness	Temperature	Speed	Air
15um	138	100	50
18um	140	100	50
20um	142	100	50
25um	145	100	50

7.2 Recommended Parameters for Air Bubble Roll: If sealing is not achieved, adjust the temperature by increasing or decreasing it as needed.

Recommended parameters for AIR BUBBLE ROLL			
Film Thickness	Temperature	Speed	Air
15um	138	100	100
18um	140	100	100
20um	142	100	100
25um	145	100	100



ATTENTION

- The above recommendations are based on basic parameters. Different film types may require different settings, and ambient temperature can also affect performance.
- There are no fixed standard parameters for speed, air, and temperature. It is essential to adjust and record these settings during daily use.

8.0 Common Faults and Treatment

FAULT PHENOMENON	SOLUTION
The film fails to move forward:	<p>If the air parameter setting is too high, it may cause the film to become stuck. Please reduce the air parameter to resolve this issue.</p> <p>Check if the blade is rusty, chipped, or loose. If any of these issues are present, please replace the blade or tighten the blade set screw.</p> <p>Make sure to check the traction wheel and belt for any debris. If you find any, simply clean it away.</p>
Sealing line is broken (temperature is over high)	Try to reduce the temperature
Air leakage, the film is not sealed properly	Try to increase the temperature
The film came out of the machine	Try to reduce the air or speed
If the power switch light is on but the display screen remains off:	<p>Inspect if the fuse of the power switch is burnt out. If so, replace it with a backup fuse.</p> <p>Verify if the emergency stop switch is in the closed state. If it is, reset it to the open position.</p>

If the fault cannot be repaired, please contact an authorized dealer or engineer for further processing.

9.0 Attention

9.1 Avoid use in humid environments.

9.2 Prior to operation, take note of the following:

1. Improper grounding may result in electric shock.
2. Do not open protective or access covers. Only authorized manufacturer or dealer service personnel may do so.
3. When operating or loading materials, keep fingers, hair, clothing, and jewelry away from the traction wheel to prevent entanglement.

9.3 Inflatable bags are intended solely for use as packaging materials. They should not be used as flotation devices, pillows, children's toys, etc.

9.4 Do not exceed 7KG when loading materials into the inflator. Avoid pressing heavily or leaning on the machine during loading.

9.5 During machine operation, static electricity is generated, and materials may also carry static electricity. Operators should not wear slippers or go barefoot as the human body can become a conductor of static electricity, resulting in discomfort or shock.

9.6 If the machine is used extensively and the film does not run smoothly or becomes stuck, promptly replace the blade.

9.7 Over time, if the sealing edge becomes weak or damaged, check the temperature and condition of the tape. Replace any damaged components promptly.

9.8 Do not start the machine without material present.

9.9 Ensure the power cord used is a single-phase three-wire cord to connect to the grounding wire inside the machine. The user's power grid must have a reliable grounding device to Roll static electricity. Failure to do so may result in discomfort or electric shock.

10.0 Film Selection and Storage Guidelines for Air Bubble Film and Air Pillow Film:

10.1 Please use film manufactured by our company. Using other films may result in bag breakage or affect packaging effectiveness and could even damage the machine.

10.2 The recommended storage temperature for the film is between 0-43°C. Outside of this temperature range may impact film performance.

10.3 The recommended ambient temperature for use is between 16-43°C. Operating outside of this temperature range may affect film performance.

11.0 Maintenance & Repair

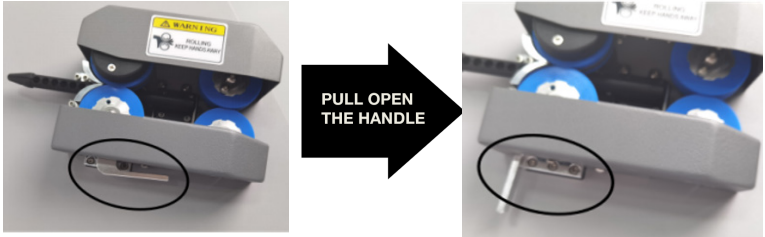
11.1 Preventive maintenance

Before performing maintenance or repairs on the D60, please remember to turn off the machine and unplug the main power cord from the socket.

Maintenance Cycle	Project	Description
Monthly	Check & Clean	<ol style="list-style-type: none">1. Open the machine belt cover and remove any dust and debris inside by blowing it out.2. Inspect the machine parts for any signs of abnormal wear.3. Clean and remove any dirt and residual glue from the wheel and belt.
Yearly	Contact	<ol style="list-style-type: none">1. Schedule an on-site inspection of the equipment.2. Contact the authorized dealer or the company's technical service representative to arrange for the equipment inspection.

11.2 Removal and installation

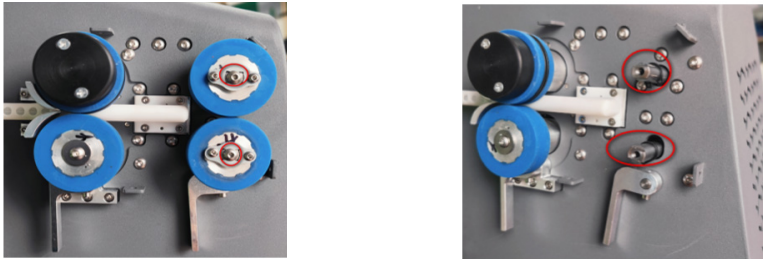
1. Please pull the rear handle apart.



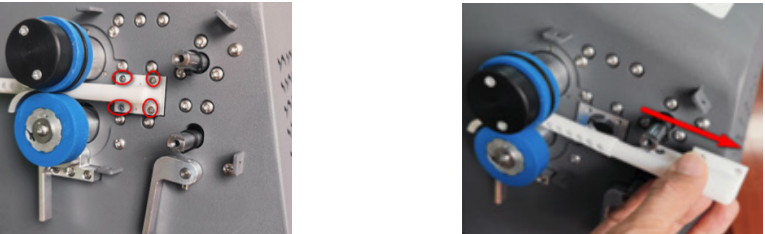
2. Use an Allen wrench to remove the four fixing screws of the upper and lower protective covers



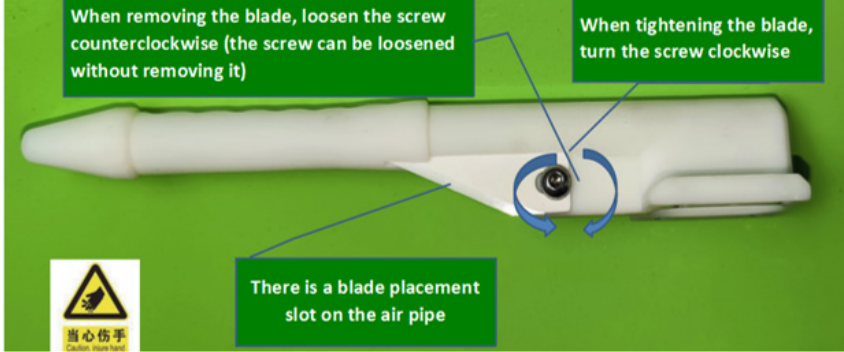
3. Remove the two fixing screws from the rear wheel (bottom left image), then proceed to remove these two wheels (bottom right image).



4. Remove the four screws that fix the air pipe (bottom left image) and pull out the air pipe to the right (bottom right image)



5. When tightening the blade, rotate the fixing screw on the air pipe clockwise.
When removing the blade, rotate the fixing screw on the air pipe counterclockwise.



6. After loosening the fixed screws of the blade, remove the damaged blade. Then, assemble the new blade according to the diagram provided. Ensure to place the blade in the groove properly, making sure the blade tip is securely buried in the groove. After replacing the blade, reverse the process of dismantling the air pipe and reinstall all accessories.



Need more help?
Call us **1-800-268-6577 - x43**

SCAN ME

Accessories / Replacement Parts

Printfinish



Printfinish
Air Bubble Film



Printfinish
Air Pillow Film

USA



Amazon Bubble
Pillow Film 



Amazon
Teflon Belt 



Amazon
Blades 

Canada



Amazon Bubble
Pillow Film 



Amazon
Teflon Belt 



Amazon
Blades 